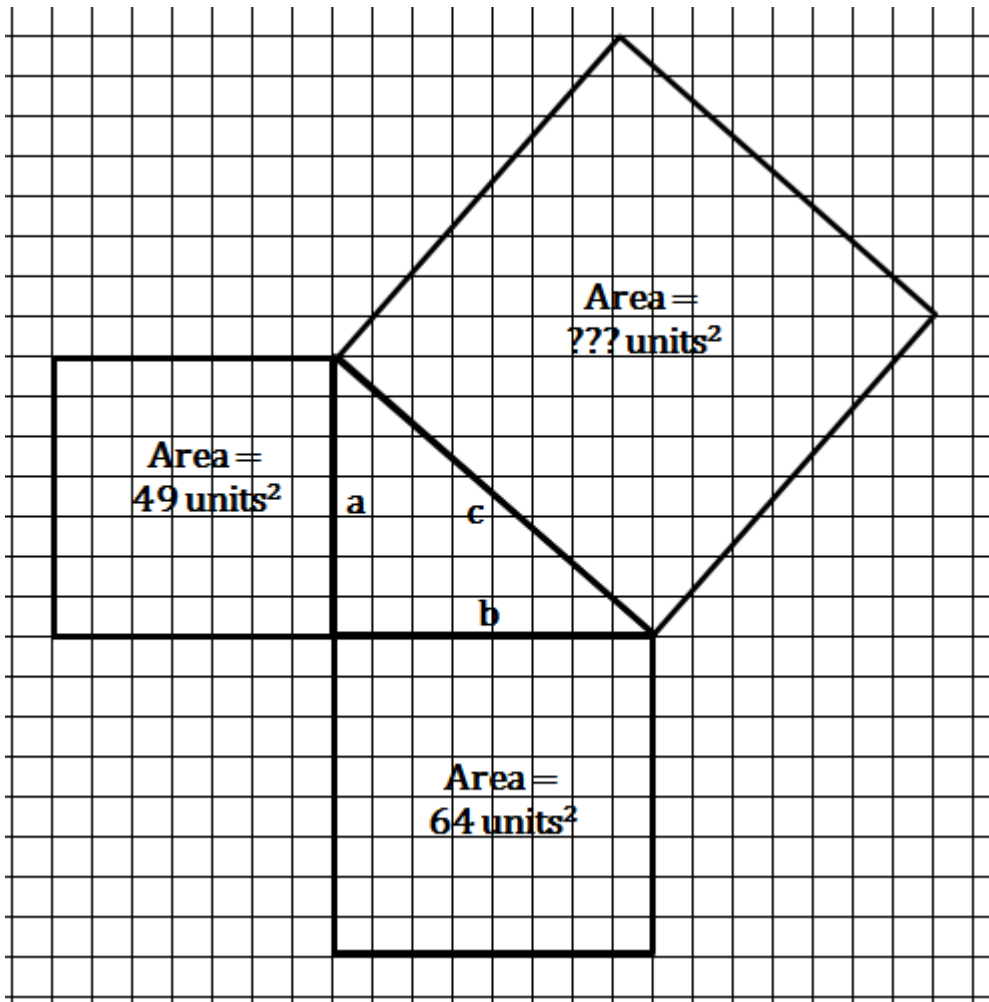


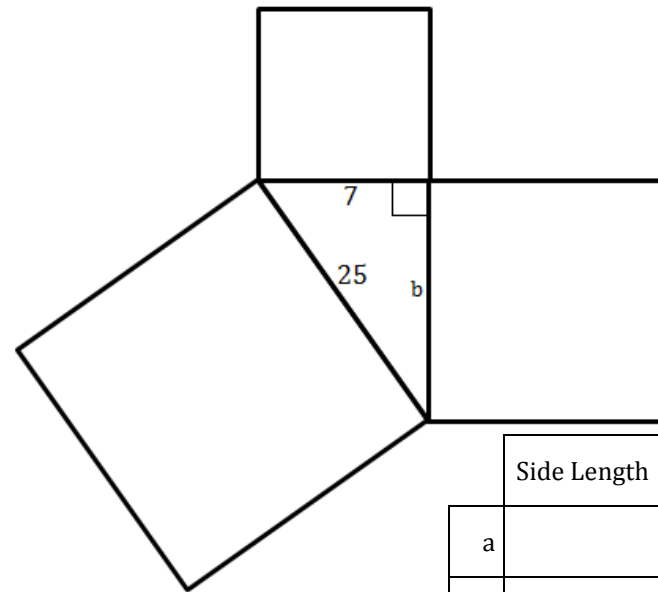
# PYTHAGOREAN THEOREM



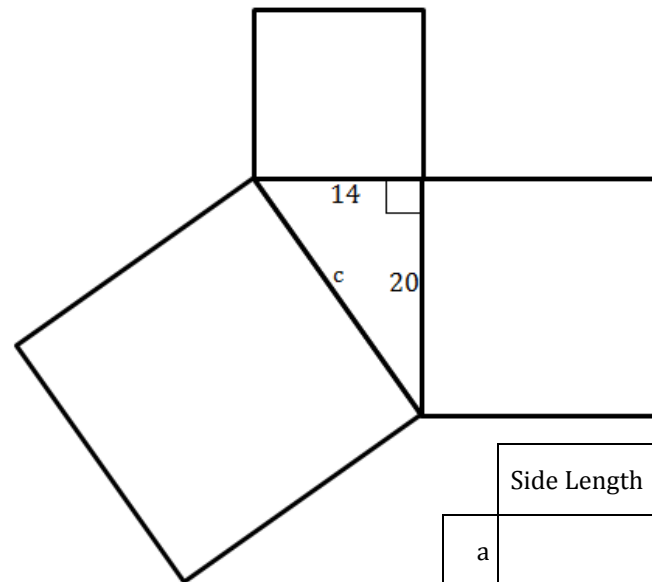
Given what you know about right triangles, what is the area of the largest square shown above?

How do you know?

Not Drawn to Scale

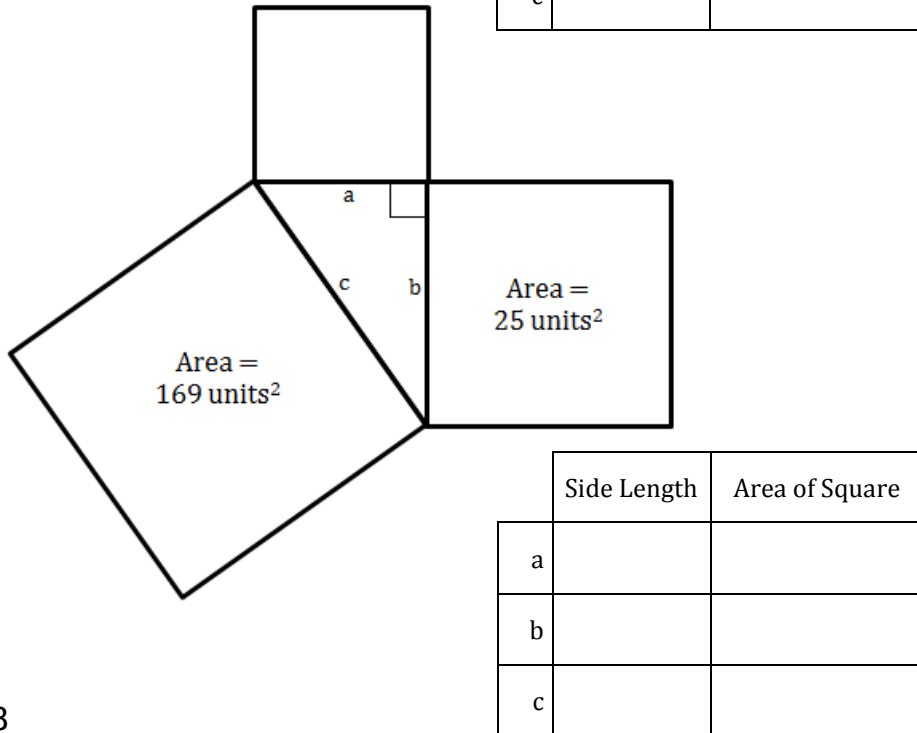
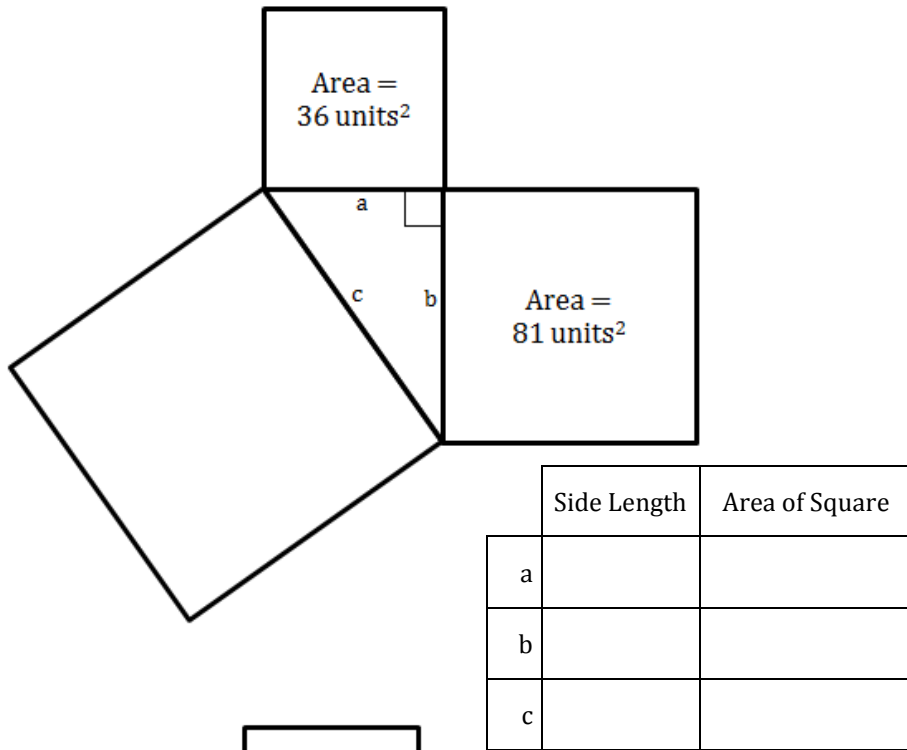


	Side Length	Area of Square
a		
b		
c		

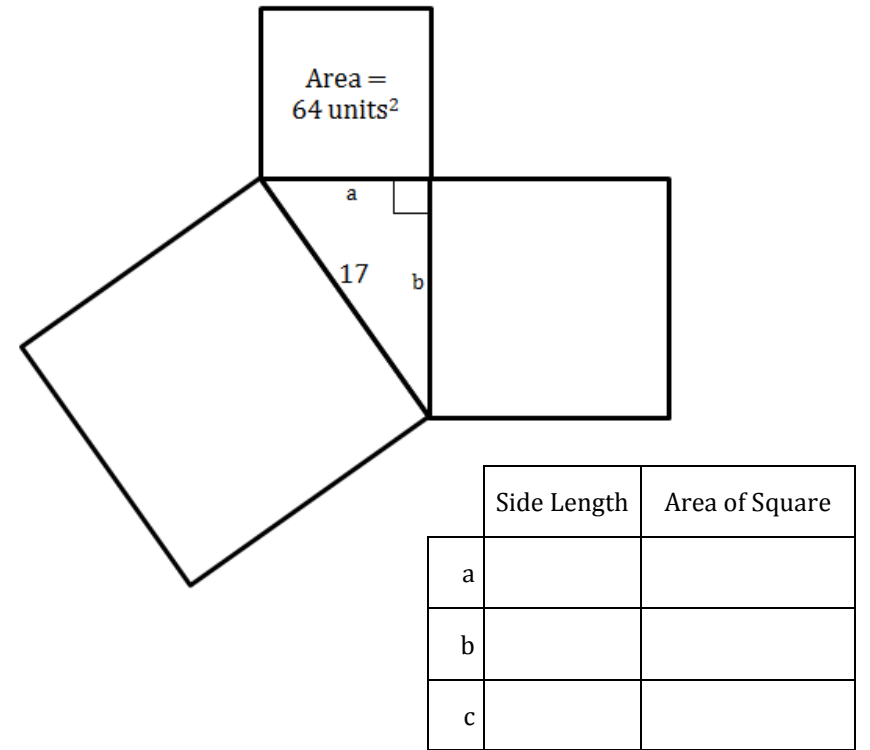
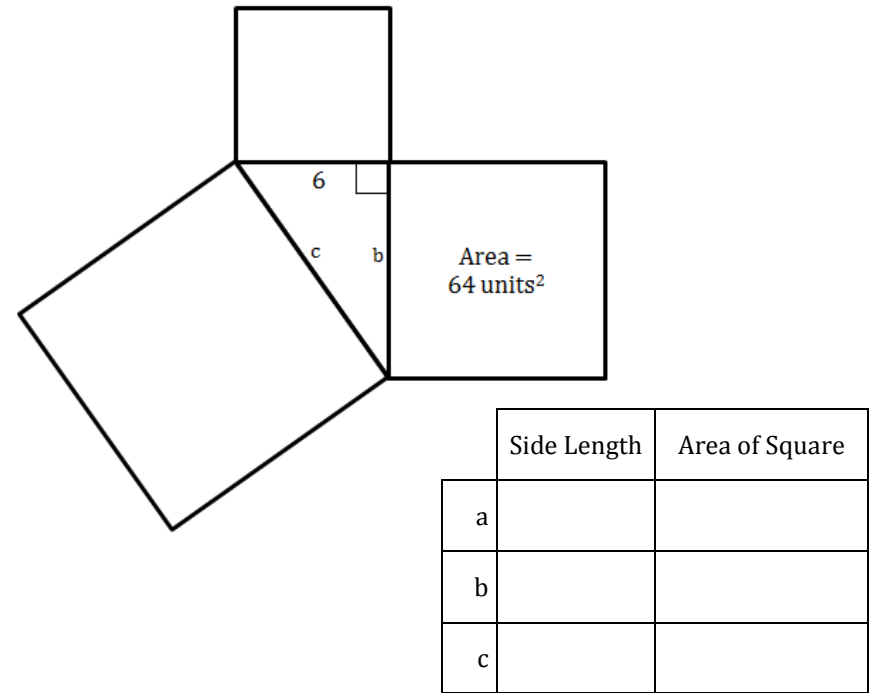


	Side Length	Area of Square
a		
b		
c		

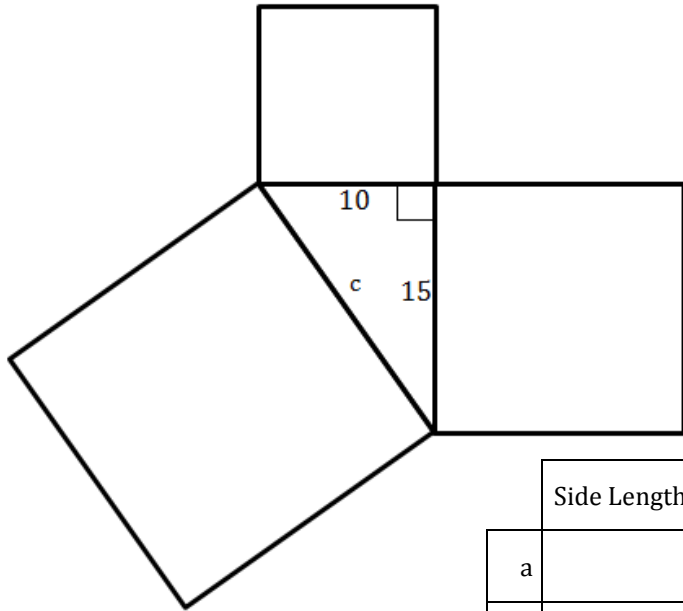
Not Drawn to Scale



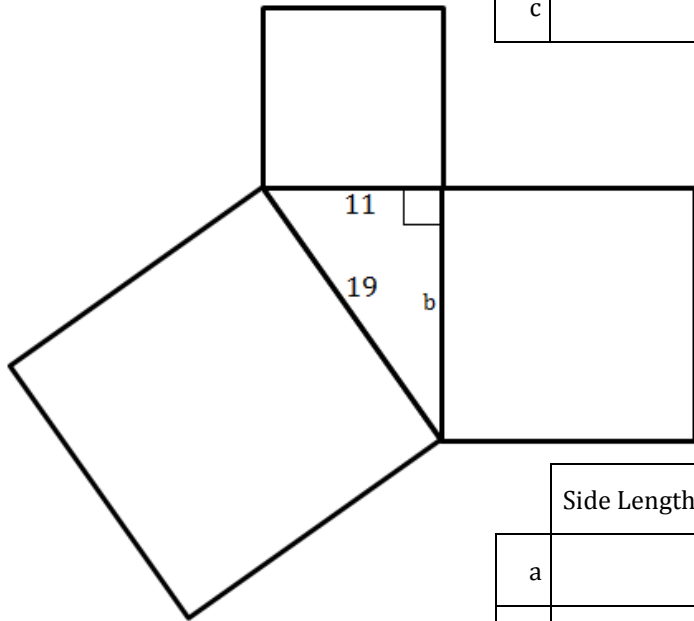
Not Drawn to Scale



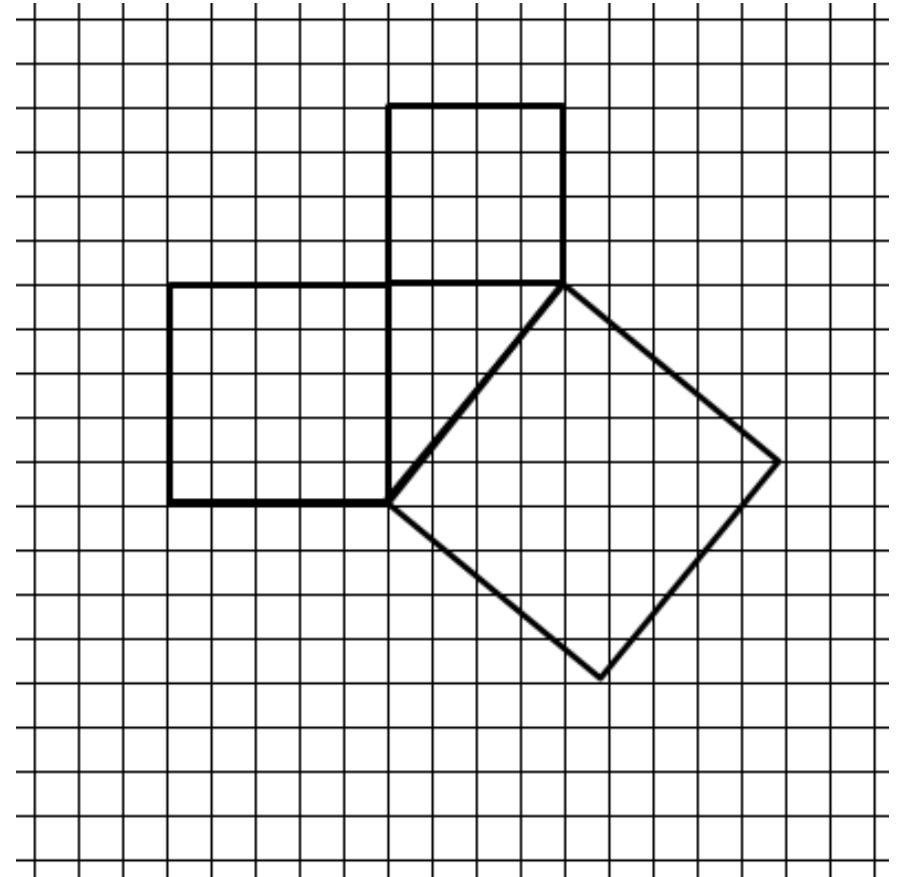
Not Drawn to Scale



	Side Length	Area of Square
a		
b		
c		



	Side Length	Area of Square
a		
b		
c		



What are the areas of the two smaller squares?

What is the area of the largest square?

What are the side lengths of all three sides of the right triangle?